

City of Miyakonojo Disaster Prevention Map Central Area



How to read this map

- Dangerous Areas**
- Dangerous Land/Mud slide Areas
 - Falling rocks/steep slope collapses
 - Landslide areas
 - Mudslide overflow areas
 - Mudslide areas
 - Predicted Flood Water Areas**
 - 0.5m zone
 - 0.5m-1.0m zone
 - 0.5m-2.0m zone
 - 2.5m-5.0m zone
 - 5.0m and above zone
- Evacuation Areas**
- Primary Evacuation Areas
 - Secondary Evacuation Areas
 - + Emergency/ Main Hospitals
 - + Other Hospitals/ Smaller Clinics
- *Please be aware that in Japan many medical departments are separated into different hospitals across the city. When trying to find the correct hospital for your medical condition(s) please use the 'Guide for Foreigners Living in Miyakonojo' as a reference.
- Places of Interest**
- 〒 Miyakonojo Central Post Office
 - Self Defence Force Base
 - ⚡ Yamada Denki
 - Aeon Aeon Shopping Center
- *Please note that these places are not designated evacuation areas in times of natural disasters. They are only intended as a guide to familiarize yourself with various locations on the map.

Contact Details	TEL
Miyakonojo City Hall	23-2111
Miyakonojo City Hall Disaster Prevention Section (Japanese Only)	23-2129
Miyakonojo City Hall Internationalization Section (Japanese, English, Chinese - OK)	23-2295

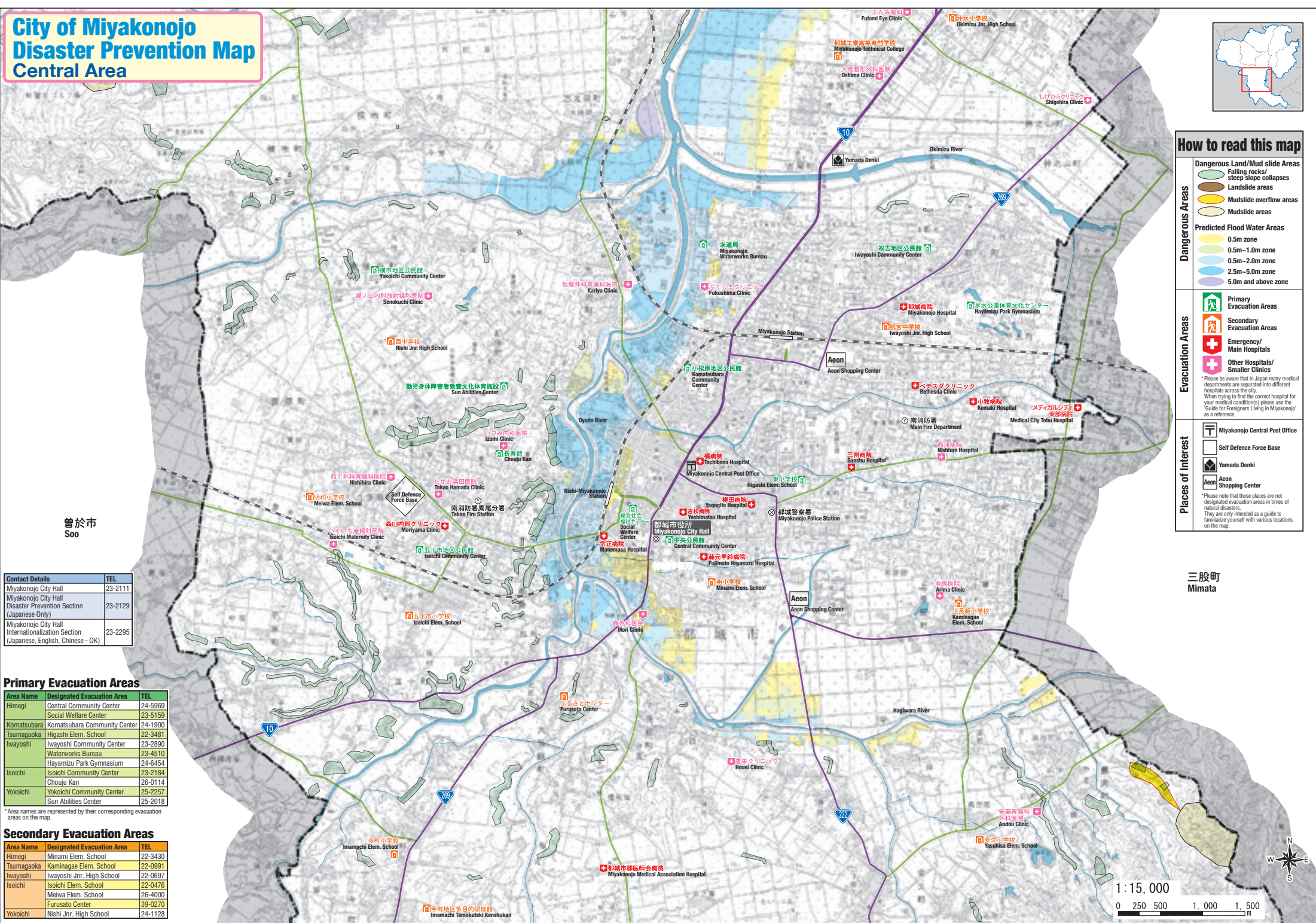
Primary Evacuation Areas

Area Name	Designated Evacuation Area	TEL
Himegi	Central Community Center	24-5969
	Social Welfare Center	23-5159
Komatsubara	Komatsubara Community Center	24-1900
Tsumagaoka	Higashi Elem. School	22-3481
	Iwayoshi Community Center	23-2890
Iwayoshi	Waterworks Bureau	23-4510
	Hayamizu Park Gymnasium	24-6454
Isoichi	Isoichi Community Center	23-2184
	Chouju Kan	26-0114
Yokoichi	Yokoichi Community Center	25-2257
	Sun Abilities Center	25-2018

*Area names are represented by their corresponding evacuation areas on the map.

Secondary Evacuation Areas

Area Name	Designated Evacuation Area	TEL
Himegi	Minami Elem. School	22-3430
	Kaminaga Elem. School	22-0931
Tsumagaoka	Iwayoshi Jnr. High School	22-0637
Iwayoshi	Isoichi Elem. School	22-0476
	Meiwa Elem. School	26-4000
Isoichi	Furusato Center	39-0270
	Nishi Jnr. High School	24-1128



三股町
Mimata



この地図は、国土地理院長の承認を得て、同院発行の2万5千分の1の地形図を複製したものである。(承認番号 平成20製複、第30号)